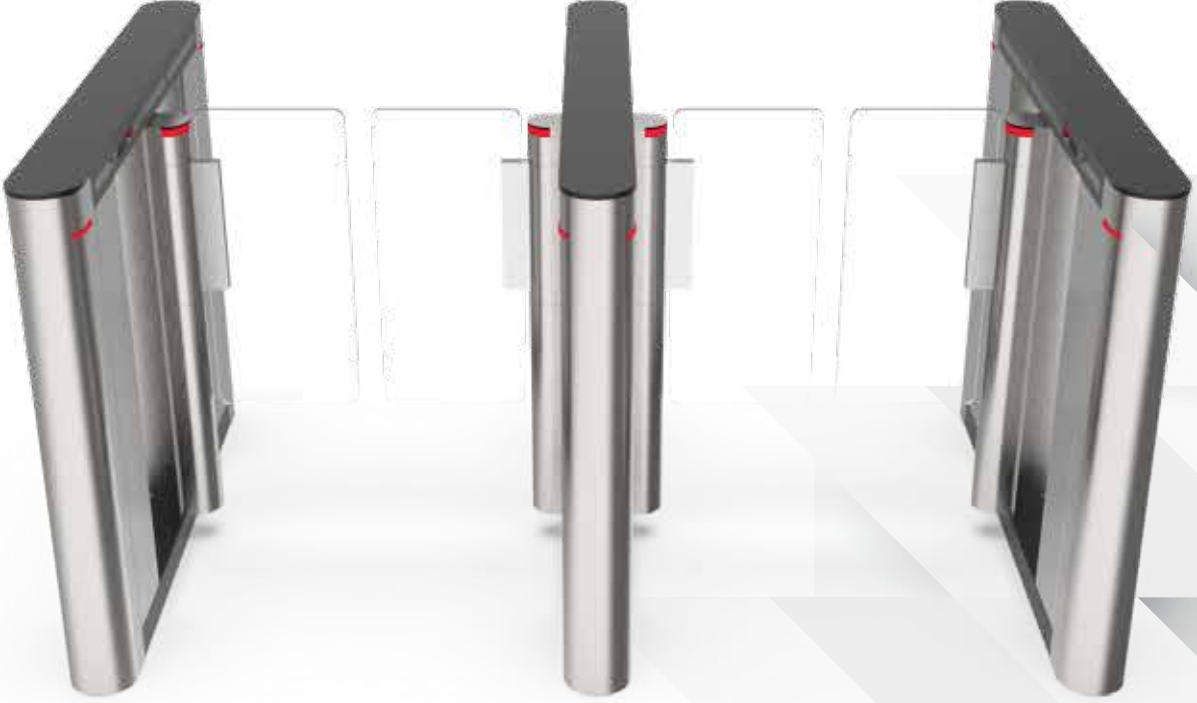




# SF 120 Flap Speed Gate





# SF 120 Flap Speed Gate



- Body :**
- » Body HRP sheet metal with static oven powder painted. The outer shell can be produced in many combinations such as stainless steel, decorative sheet or painted sheet.
  - » Top cover 8-10mm Plexi, Ops. 8-10mm Tempered & Polished Glass
  - » Leafs 8-10mm Plexi, Ops. 8-10mm Tempered Polished Glass
  - » Middle Led Indicators

- Motor and Brake :**
- » The motor is BLDC and reducer and is suitable for intensive and long-lasting use. For system safety, an electromechanical brake is used to ensure the robustness and longevity of the existing structure.

- Safety :**
- » You can customize your device according to many requests and demands with the quick menu option on the main card. For example; There are many features such as Entry & Exit free or card pass option, Automatic shutdown and time setting, Motor opening & closing speed, smooth mode according to density, leaf impact response, preventing unauthorized entry from the opposite direction, opening direction in case of panic or disaster, leaf thrust power, leaf deceleration rate.
  - » RS 485 Connection Port Available
  - » Transition Corridor area is monitored by mutual sensor.

- Emergency and Evacuation :**
- » When de-energized or panic contact is received, it automatically opens in the set direction, the leafs remain open until the emergency situation returns to normal. (Since this structure is not battery powered, it is designed to allow free passage without maintenance and replacement).

- Intensive Use :**
- » In areas where there is density, the leaf is in the open position by taking consecutive contacts and with the LED indicator, the authority of the person passing can be monitored and a smoother passage can be provided.

- Transition Comfort and Solutions :**
- » Passage distance can be produced specially to order in the range of min 50cm to max 100cm.
  - » A corridor space is provided for wheelchair and goods passage.
  - » Leaf Height Standard: We have desired size solutions between 95cm and 180cm.

- Body and Options ;**
- Body:** Electrostatic Oven Powder Coated or AISI 304 Quality Stainless Steel
  - Side Panels:** Stainless, Decorative Stainless or Electrogalvanized Steel Sheet Oven Powder Coated
  - Top Cover:** 8-10mm Plexi, Ops. 8-10 mm glass
  - Movable Leafs:** 8-10 mm Plexi, Ops. Tempered & Polished Glass

- Electromechanic ;**
- Power Supply:** 230 VAC, 50/60 Hz
  - Power Supply Unit:** 24V
  - Drive Transmission Mechanism:** BLDC Motor and Gearbox, Integrated encoder and Electromagnetic brake.
  - Opening/Closing Period:** 0,5 – 1,2 sn (varies according to the size of the moving leaf.)
  - Sensors:** 3 or 4 sensors can be increased according to preferred models.
  - IP:** IP54
  - Communicate:** OPS. RS485, TCP/IP
  - Warranty :** 2 Years





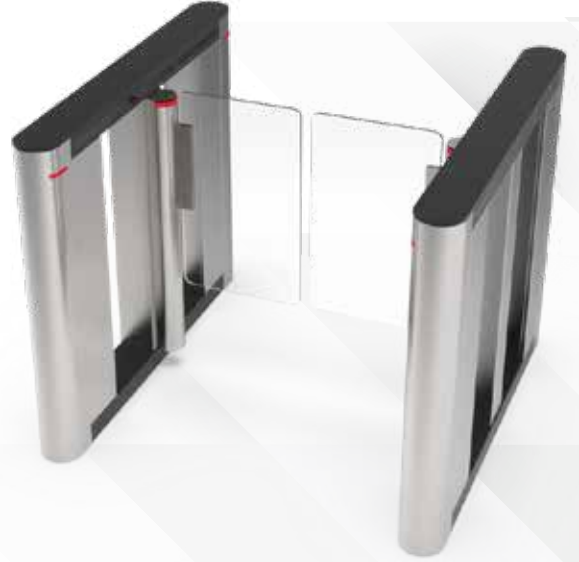
# SF 120 Flap Speed Gate



## SF 120 Standart



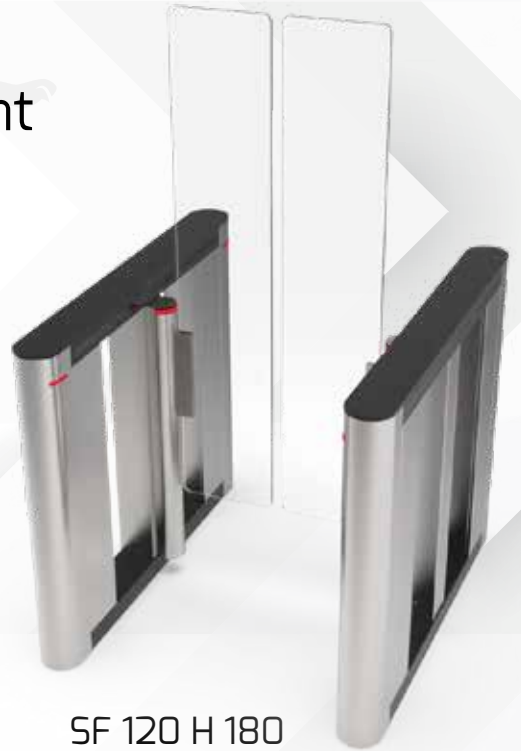
## SF 120 XL



## SF 120 Height

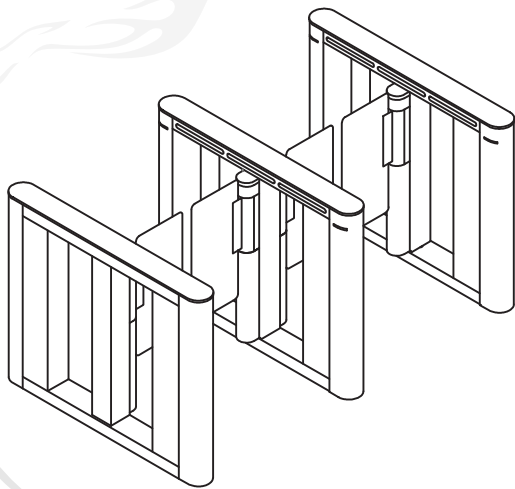
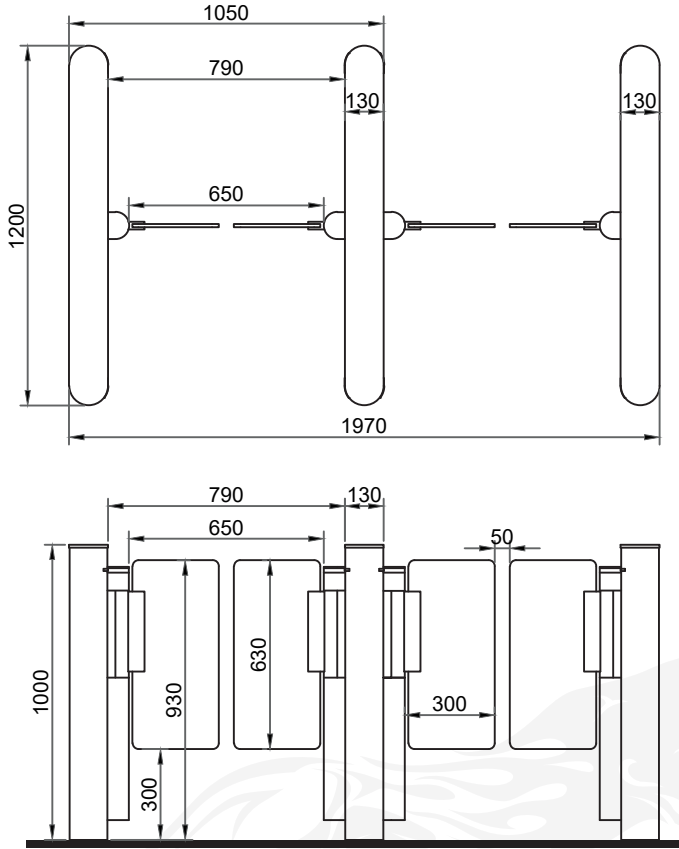


SF 120 H 130

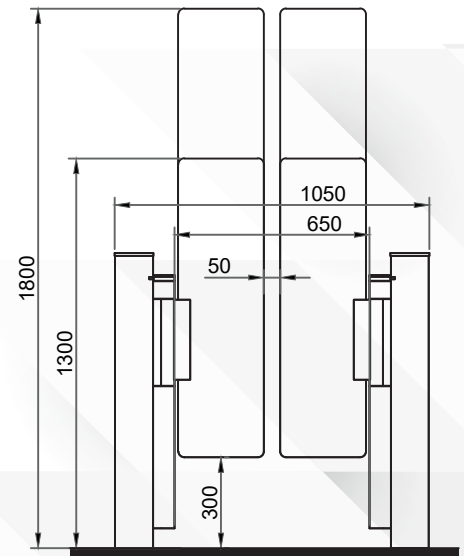


SF 120 H 180

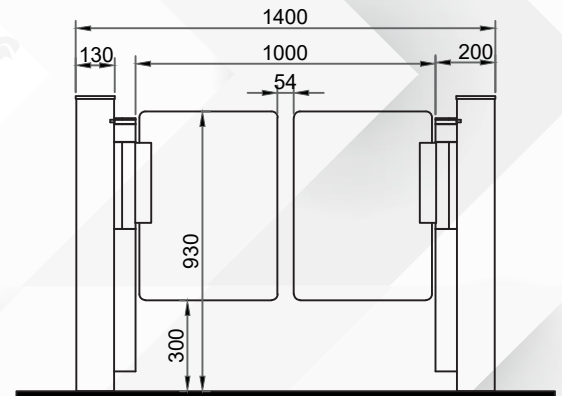
## SF 120 Standart



## SF 120 Height



## SF 120 XL



### SPECIFICATIONS;

#### Dimensions;

Transition Width: 500 – 1000 mm

Leaf Height: 950 ~ 1800 mm

Movable Leaf Bottom Clearance: 320 mm

Body Length: 1200 mm

Body Height: 1000 mm