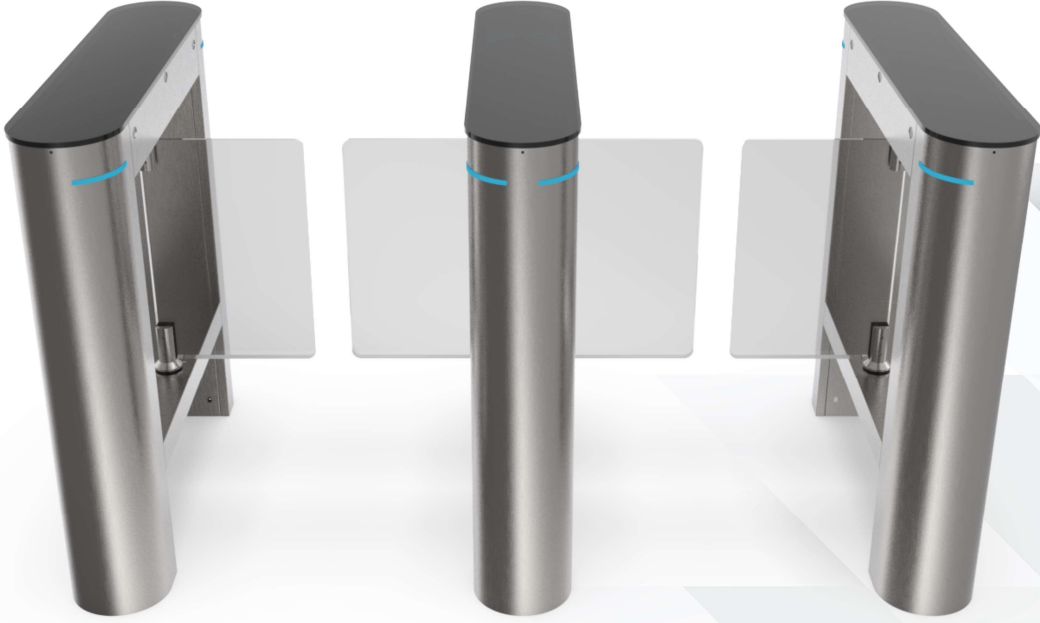




# SF 100

COMPACT EDITION





# SF 100 COMPACT EDITION



## Body :

- >> The body is produced in two different body types as AISI 304 quality stainless steel or electrostatic oven powder painted.
- >> Top cover 8mm Plexi, Ops. 8mm Tempered & Ground Glass
- >> Leafs 8mm Plexi. Optionally 10mm Plexi Transparent or colored

## Engine and Brake:

- >> The motor is BLDC and reducer and is suitable for intensive and long-lasting use.

## Security :

- >> You can customize your device according to many requests and demands with the quick menu option on the main card. For example; There are many features such as Entry & Exit free or card pass option, Automatic shutdown and time setting, Motor opening & closing speed, smooth mode according to density, leaf impact response, preventing unauthorized entry from the opposite direction, opening direction in case of panic or disaster, leaf thrust, leaf deceleration rate.
- >> Ops : RS 485 Connection Port Available
- >> Transition corridor area is monitored by mutual sensors.

## Emergency and Evacuation;

- >> When de-energized or panic contact is received, it automatically opens in the set direction, the leafs remain open until the emergency situation returns to normal. (Since this structure is not battery powered, it is designed to allow free passage without maintenance and replacement).

## Intensive Use ;

- >> In areas where there is density, the leaf is in the open position by taking consecutive contacts and the authority of the person passing with the LE D indicator can be monitored and a smoother passage can be provided.

## Transitional Comfort and Solutions;

- >> Passage distance is standard and can be produced specially to order in the range of Max 60cm.

## FEATURES

### Dimensions;

- Transition Width : 450 to 600mm
- Door Leaf Spring Height : 830 mm
- Wing Height : 500mm
- Movable Wing Bottom Clearance : 330 mm
- Body Length : 1000 mm
- Body Height : 990 mm
- Body Width : 200mm

### Body and Options

- Chassis : AISI 304 Quality Stainless Steel or Electrostatic Powder Coated
- Top cover : 8mm Plexi, Ops. 8mm glass
- Door Barrier Leaf : 8 mm Transparent Plexi,

### Electromechanics

- Electricity Supply: 230 VAC, 50/60 Hz
- Power Supply Unit: 24V
- Drive Mechanism: BLDC Motor and Gearbox, Integrated encoder
- Opening/Closing Time: 0.5 - 1.2 sec (depending on the size of the moving wing)
- Sensors 3 sensors according to preferred models.
- IP: IP54
- Communication Option : RS485, TCP/IP
- Warranty : 2 Years

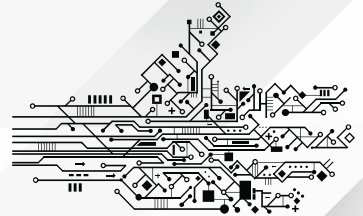
## DC BRUSHLESS MOTOR

- >> Compared to normal DC motor with brushes, by using DC brushless motor, the opening-closing speed of the turnstile is controlled better and more stable with improved life cycle.



## IMPROVED MECHANISM

- >> The mechanism is designed to extend the lifetime of the motor compared to conventional designs. The movement mechanism is optimized to ensure quiet operation.



## RELIABLE & PROTECTED POWERFUL ELECTRONIC BOARD

- >> Quick and easy setup with numeric display, practical installation between master & slave cards, device status monitoring with LED indicators and easy testing of the keypad on the panel.



