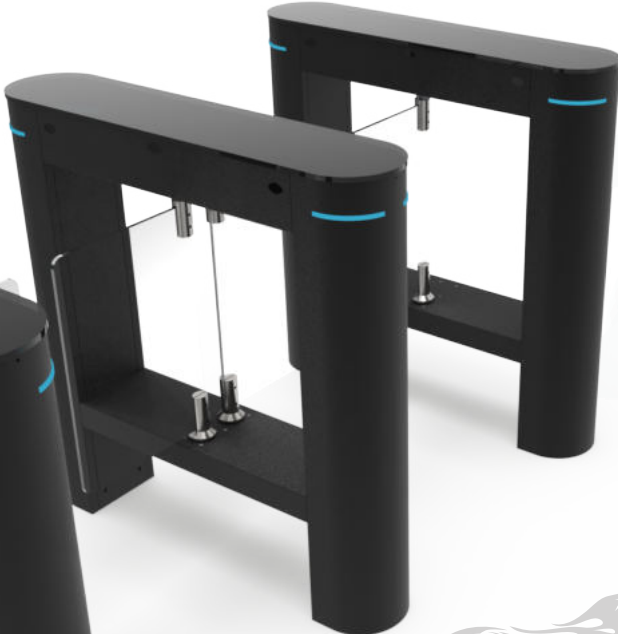
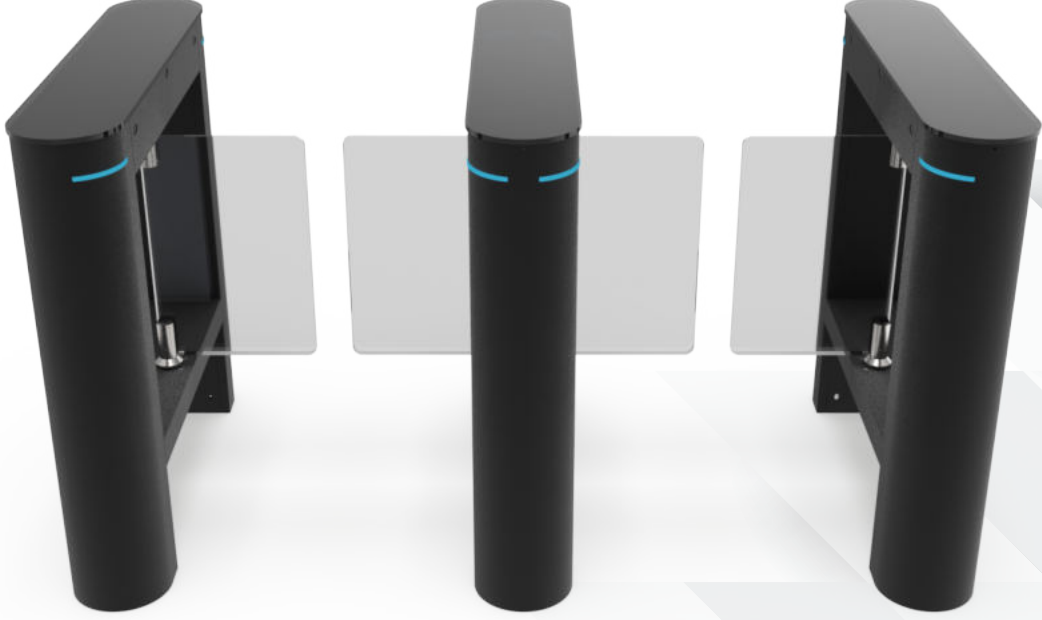




SF 100 BLACK EDITION LONG



Body :

- >> The body is produced in two different body types as AISI 304 quality stainless steel or electrostatic oven powder painted.
- >> Top cover 8mm Plexi, Ops. 8mm Tempered & Ground Glass
- >> Leafs 8mm Plexi. Optionally 10mm Plexi Transparent or colored

Engine and Brake;

- >> The motor is BLDC and reducer and is suitable for intensive and long-lasting use.

Security :

- >> You can customize your device according to many requests and demands with the quick menu option on the main card. For example; There are many features such as Entry & Exit free or card pass option, Automatic shutdown and time setting, Motor opening & closing speed, smooth mode according to density, leaf impact response, preventing unauthorized entry from the opposite direction, opening direction in case of panic or disaster, leaf thrust, leaf deceleration rate.
- >> Ops : RS 485 Connection Port Available
- >> Transition corridor area is monitored by mutual sensors.

Emergency and Evacuation;

- >> When de-energized or panic contact is received, it automatically opens in the set direction, the leafs remain open until the emergency situation returns to normal. (Since this structure is not battery powered, it is designed to allow free passage without maintenance and replacement).

Intensive Use ;

- >> In areas where there is density, the leaf is in the open position by taking consecutive contacts and the authority of the person passing with the LE D indicator can be monitored and a smoother passage can be provided.

Transitional Comfort and Solutions;

- >> Passage distance is standard and can be produced specially to order in the range of Max 60cm.

FEATURES

Dimensions;

Transition Width : 450 to 900mm
Door Leaf Spring Height : 830 mm
Wing Height : 500mm
Movable Wing Bottom Clearance : 330 mm
Body Length : 1300 mm
Body Height : 990 mm
Body Width : 200mm

Body and Options

Chassis : AISI 304 Quality Stainless Steel or Electrostatic Powder Coated
Top cover : 8mm Plexi, Ops. 8mm glass
Door Barrier Leaf : 8 mm Transparent Plexi

Electromechanics

Electricity Supply: 230 VAC, 50/60 Hz
Power Supply Unit: 24V
Drive Mechanism: BLDC Motor and Gearbox, Integrated encoder
Opening/Closing Time: 0.5 - 1.2 sec (depending on the size of the moving wing)
Sensors 3 sensors according to preferred models.
IP: IP54
Communication Option : RS485, TCP/IP
Warranty : 2 Years



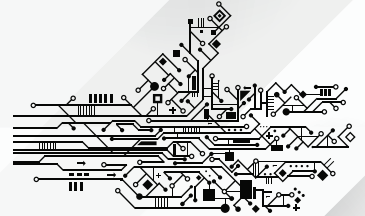
DC BRUSHLESS MOTOR

- >> Compared to normal DC motor with brushes, by using DC brushless motor, the opening-closing speed of the turnstile is controlled better and more stable with improved life cycle.



IMPROVED MECHANISM

- >> The mechanism is designed to extend the lifetime of the motor compared to conventional designs. The movement mechanism is optimized to ensure quiet operation.



RELIABLE & PROTECTED POWERFUL ELECTRONIC BOARD

- >> Quick and easy setup with numeric display, practical installation between master & slave cards, device status monitoring with LED indicators and easy testing of the keypad on the panel.



